

A CHAD HYLTON FILM



DIRECTED & PRODUCED BY  
Chad Hylton

WRITTEN BY Chad Hylton &  
Colin Henning, BASED ON  
*An Ideal Husband* by  
Oscar Wilde

TYPE: Short Film  
GENRES: Comedy, LGBTQ  
RUNTIME: 17 minutes  
COUNTRY: U.S.  
LANGUAGE: English  
SHOOTING FORMAT: Digital  
ASPECT RATIO: 256:135

CAST:  
GEORGIA MORGAN  
COLIN HENNING  
BROOKE ELIZABETH  
CHAD HYLTON

CREW:  
CINEMATOGRAPHY & GAFF  
Aidan Macaluso  
ASSISTANT DIRECTOR  
Hayleigh Hart Franklin  
PROD. SOUND & POST MIX  
Somepoint Sound  
-Drummond L.  
Dominguez-Kincannon  
-Ethan Gustavson  
COLORIST  
Jefferson Rosa  
SCRIPT SUPERVISOR / PA  
Brooke Elizabeth  
COSTUME & SET DESIGN  
Colin Henning

# An Un-Ideal Husband



A C.H. SQUARED PRODUCTION

"AN UN-IDEAL HUSBAND" DIRECTED BY CHAD HYLTON

WRITTEN BY CHAD HYLTON AND COLIN HENNING, BASED ON "AN IDEAL HUSBAND" BY OSCAR WILDE

FEATURING GEORGIA MORGAN, COLIN HENNING, BROOKE ELIZABETH, CHAD HYLTON

CINEMATOGRAPHER AND GAFFER AIDAN MACALUSO, EDITED BY CHAD HYLTON

POSTER DESIGN BY CHAD HYLTON, COPYRIGHT CHAD HYLTON MMXXIII

*An Un-Ideal  
Husband*



*Brooke Elizabeth as Mrs. Cheveley*

### LOGLINE:

“THE GAY NINETIES” VICTORIAN ENGLAND GETS GAYER WHEN HIGH-SOCIETY BACHELOR, LORD GORING, IS IN THE COMPANY OF DANDY MABREY CHILTERN. IN THIS QUEER ADAPTION OF THE OSCAR WILDE PLAY, LOVE IS TESTED WHEN GORING’S EX-FIANCÉ, MRS. CHEVELEY, RETURNS TO LONDON WITH BLACKMAIL, SCANDAL, & QUICK-WIT; TURNING THE LIVES OF HIGH SOCIETY UPSIDE DOWN!



*Colin Henning as  
Lord Goring*

*Chad Hylton as  
Mabrey*

*Georgia Morgan as  
Lady Chiltern*

### SYNOPSIS:

LADY GERTRUDE CHILTERN HAS EVERYTHING A HIGH-SOCIETY GIRL COULD WANT: AN IDEAL HUSBAND. A CHARITABLE NOBLE WOMAN, GERTRUDE STRUCTURES HER LIFE BY A SET OF VALUES OF WHICH SHE NEVER SWAYS. SHE ROUTINELY SPARS WITS WITH HER DEAR FRIEND AND FOREVER BACHELOR, LORD GORING, URGING HIM TO FINALLY SETTLE DOWN WITH AN ELIGIBLE GIRL. LITTLE DOES SHE KNOW, HE ONLY HAS EYES FOR HER BROTHER-IN-LAW, MABREY. WHEN A FORMER FOE OF THE PAIR MAKES A SURPRISING VISIT WITH BLACKMAIL ADDRESSED TO ROBERT, THE TWO RECKON WITH HIDDEN SECRETS, POSING THE QUESTION: DOES THE SCANDAL MAKE A MAN?

**\*\*WE STAND IN SOLIDARITY WITH THE WGA & SAG STRIKE - ANY REFERENCE TO WRITTEN WORK IS SOLELY FOR THE CONTEXT OF THE SHORT, AND TO PROMOTE THE FILM FESTIVAL.\*\***

## NOTES FROM THE DIRECTOR, CHAD HYLTON:

When my partner, Colin (*Lord Goring*), suggested I read *An Ideal Husband*, I fell in love. Wilde's biting wit (with a dose of sugar) spoke of real social issues — poking fun at society with its own tools. Beyond the play, Wilde's personal story was especially striking, as he grew up a queer writer in the Victorian Era. *An Un-Ideal Husband* introduces "Bachelor Goring" as gay - instead of courting Robert's sister *Mabel*, he courts his brother, *Mabrey*. Goring is well-known in literature as the Wilde figure, so framing him as a gay man was fated - and cathartic, presenting Goring how Wilde possibly wished he could. I first wrote a feature film adaptation entitled *An Honourable Bachelor* and then, with Colin, reworked that feature into *An Un-Ideal Husband* - a "proof of concept", but a standalone story all its own. Working with my partner in life and art is the greatest joy - and playing lovers on screen felt effortless - although a lot of effort was put in!



Colin Henning (*left*), my Goring in real life and onscreen, also serves as Co-Writer, Costume Designer, Acting/Dialect Coach and the other half of *C.H. Squared* - our production company (we both have C.H. initials, get it? It's a math joke!) With his help, we made NYC Harlem feel like 1890s London. Every design detail from Mabrey's buttonhole to Cheveley's crow hat were meticulously sourced/created by Colin.

In the film, I (*right*) play Mabrey Chiltern: the sparkling, charismatic Dandy that coaxes Goring out of his shell. Acting in the short was a mammoth task, but a thoroughly rewarding one. Colin, in fact, coaxed *me* out of my shell, as he convinced me to be *in front* of the screen as well as behind. It was a whirlwind of a 3-day shoot, but truly something magical. *An Un-Ideal Husband* is a film about love, made with love.



**\*\*WE STAND IN SOLIDARITY WITH THE WGA & SAG STRIKE - ANY REFERENCE TO WRITTEN WORK IS SOLELY FOR THE CONTEXT OF THE SHORT, AND TO PROMOTE THE FILM FESTIVAL.\*\***

## LOVE & COMPASSION TRIUMPH OVER IDEALS

*An Un-Ideal Husband* is a proof-of-concept for a completed feature script, entitled, *An Honourable Bachelor*. This feature adaptation interweaves classic Wilde text with razor-sharp original dialogue, enriching Wilde's expertly crafted archetypes by giving each character an expanded voice, full of convictions – and contradictions. We were so excited about the feature, we knew we had to make it – into a short.

Crafting the feature into a short was a challenging puzzle, pieced together by centering its themes of public versus private honour, and the perceptions of love - then, condensing it to one scandalous afternoon Tea! Our short maintains the feature's sensibility to be as funny as it is passionate, and dramatic. Witty repartee, slapstick comedy, and good-old-fashioned melodrama are ingrained in the film's story - with heightened stakes by presenting the character of Goring as gay, amplifying Wilde's message of empathy in the face of scandal.



*An Un-Ideal Husband* is the perfect film for *right now*. With the ever-growing appetite for period romance, from the steadfast reverence of Austen to the modern mania of *Bridgerton*, this movie feeds that audience, as well as answer the call for more LGBTQ+ depictions in Cinema; we uplift queer voices by telling a queer story, adapted by a queer filmmaker, based on literature from a queer Victorian playwright.

Lastly, on the subject of morality, our modern society is as polarizing as ever in values - strict ideals of what is right and who is wrong. But, the beauty in people is that we are constantly evolving. And this film highlights that although people are *Un-Ideal*, they can still be *Honourable*. As Goring states, "Every man is supremely imperfect, but, therefore, inclined to change." And that universal message is one we all need to hear.



*An Un-Ideal Husband*

**\*\*WE STAND IN SOLIDARITY WITH THE WGA & SAG STRIKE - ANY REFERENCE TO WRITTEN WORK IS SOLELY FOR THE CONTEXT OF THE SHORT, AND TO PROMOTE THE FILM FESTIVAL.\*\***

## CAST & CREW



**CHAD HYLTON**  
**“MABREY CHILTERN”**  
**DIRECTOR. CO-WRITER. ACTOR.**  
**PRODUCER.**

**COLIN HENNING**  
**“LORD GORING”**  
**ACTOR. CO-WRITER. DIALECT**  
**COACH. COSTUME DESIGN.**

**PARTNERS IN BOTH LIFE AND ART,**  
**THEIR JOINTLY PRODUCED PROJECTS ARE “C.H. SQUARED”**

With five years experience in post-production editing, Chad Hylton has worked with brands such as *Bulgari*, *Tommy Hilfiger*, and *Canon*.

His passion, in narrative work, extends to writing where his feature comedy script, *Rewrites*, placed as a Quarterfinalist in the Filmmatic Screenplay Competition. *Love You, Thank You*, his SUNY Purchase BFA Film Thesis, was an Official Selection of the San Antonio LGBT International Film Festival (2017) and has garnered over 900,000 views on YouTube.

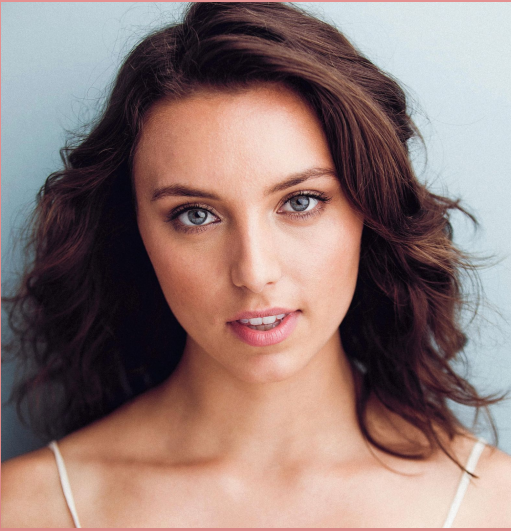
Raised in NC, Colin Henning received his BFA in Acting from SUNY Purchase & has since performed at The Drama League, Theater for the New City, and appeared in the second season of Hulu’s *Wild Crime*. his feature screenplay, *Mrs Clinton*, placed as a comedy semifinalist at the Raindance Film Festival Script Competition (2022) while, *Blood*, his horror script inspired by Countess Elizabeth Báthory, placed as a Quarterfinalist in the Big Apple Film Festival Script Competition that same year.

**AN UN-IDEAL HUSBAND IS AN OFFICIAL SELECTION OF THE BIG APPLE FILM FESTIVAL, 2023.**



**CHAD HYLTON (LEFT) & COLIN HENNING (RIGHT) FOR THE SCREENING OF AN UN-IDEAL HUSBAND.**

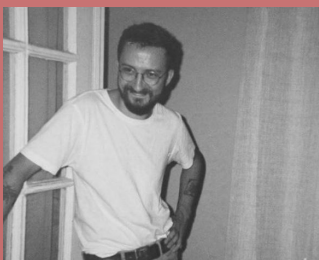
## CAST & CREW



Georgia Morgan (*Lady Chiltern*) was born and raised in Asheboro, North Carolina, but found her way to New York to earn her BFA in Acting at SUNY Purchase. Since graduating, she has appeared in AMC's *Interview with a Vampire*, and in theater across the country, but often returns to North Carolina to perform at her local theater, and support her hometown's artistic community.



Brooke Elizabeth (*Mrs. Cheveley*) is from Rochester, NY. She moved to New York City after becoming an elementary school teacher. After five years teaching, Brooke became a student again at The Atlantic Acting School. She has appeared in Colin Henning's *Appalachian Dog*, and currently trains with Deborah Hedwall.



Aidan Macaluso (*Cinematographer / Gaffer*) has been shooting for over a decade. A graduate from the SUNY Purchase BFA Film Program, his cinematography credits include *The Ballad of Junior* (Grand Jury Prize Winner at the Indie Memphis Film Festival) and the Midwestern Drama, *Paint the Alpacas*.



Hayleigh Hart Franklin (*Assistant Director / Production Assistant*) is an LA-raised, NYC-based actress and producer, and graduate of the SUNY Purchase BFA Acting Program. She has appeared in theater across the country, and previously worked with Colin Henning in his short film, *Libba*, about the life and music of Elizabeth Cotten.

THANK YOU, IT'S BEEN *IDEAL!*



*AN UN-IDEAL HUSBAND* CAST. BIG APPLE FILM FESTIVAL, 2023. OFFICIAL SELECTION.

LINKS:

CHADHYLTON.COM  
COLINHENNING.COM  
GEOMORGAN.COM

IG:  
@chsquaredfilms  
@chadhazenhylton  
@whosgeorgiamorgan



DIRECTED & PRODUCED BY  
Chad Hylton

WRITTEN BY Chad Hylton &  
Colin Henning, BASED ON  
*An Ideal Husband* by  
Oscar Wilde

COPYRIGHT 2023  
C.H. Squared Productions